

ITEM	ABBREVIATION	TAG	SPECIFIC GRAVITY: 0.880 (m <sup>3</sup> )		VEGHT (t)	CENTER OF GRAVITY (m)			INERTIA (m <sup>4</sup> )		
			FRAME No.			x	y	z	x	y	z
			Initial	Final							
NO. 1 CARGO OIL TANK (PS)	N1 CO TK-P	TQ-1358508P	50	96	21726.9	19337.0	279.800	18.226	15.687	30754.7	63772.9
NO. 1 CARGO OIL TANK (SB)	N1 CO TK-S	TQ-1358508S	50	96	21726.9	19337.0	279.800	-11.226	15.687	30754.7	63772.9
NO. 2 CARGO OIL TANK (PS)	N2 CO TK-P	TQ-1358509P	83	98	25348.1	22559.8	246.600	11.226	15.687	35888.5	10269.0
NO. 2 CARGO OIL TANK (SB)	N2 CO TK-S	TQ-1358509S	83	98	25348.1	22559.8	246.600	-11.226	15.687	35888.5	10269.0
NO. 3 CARGO OIL TANK (PS)	N3 CO TK-P	TQ-1358509P	76	83	29348.1	22559.8	208.800	11.226	15.687	35888.5	10269.0
NO. 3 CARGO OIL TANK (SB)	N3 CO TK-S	TQ-1358509S	76	83	29348.1	22559.8	208.800	-11.226	15.687	35888.5	10269.0
NO. 4 CARGO OIL TANK (PS)	N4 CO TK	TQ-1358509P	69	76	29348.1	22559.8	171.000	11.226	15.687	35888.5	10269.0
NO. 4 CARGO OIL TANK (SB)	N4 CO TK-S	TQ-1358509S	69	76	29348.1	22559.8	171.000	-11.226	15.687	35888.5	10269.0
NO. 5 CARGO OIL TANK (PS)	N5 CO TK-P	TQ-1358509P	62	69	25348.1	22559.8	133.200	11.226	15.687	35888.5	10269.0
NO. 5 CARGO OIL TANK (SB)	N5 CO TK-S	TQ-1358509S	62	69	25348.1	22559.8	133.200	-11.226	15.687	35888.5	10269.0
NO. 6 CARGO OIL TANK (PS)	N6 CO TK-P	TQ-1358509P	55	62	25348.1	22559.8	95.400	11.226	15.687	35888.5	10269.0
NO. 6 CARGO OIL TANK (SB)	N6 CO TK-S	TQ-1358509S	55	62	25348.1	22559.8	95.400	-11.226	15.687	35888.5	10269.0
NO. 7 CARGO OIL TANK (PS)	N7 CO TK-P	TQ-1358507P	49	55	21726.9	19337.0	69.300	11.226	15.687	30754.7	63772.9
NO. 7 CARGO OIL TANK (SB)	N7 CO TK-S	TQ-1358507S	49	55	21726.9	19337.0	69.300	-11.226	15.687	30754.7	63772.9
CLEAN SLOP TANK	CLEAN SLOP TK-S	TQ-533504S	40	49	4396.4	4396.4	48.050	-12.127	15.682	5993.2	918.1
DIRTY SLOP TANK	DIRTY SLOP TK-P	TQ-533504P	40	49	4396.4	4396.4	48.050	12.127	15.682	5993.2	918.1
TOTAL			420	49	329933.2	290378.7					

ITEM	ABBREVIATION	TAG	SPECIFIC GRAVITY: 1.025 (m <sup>3</sup> )		VEGHT (t)	CENTER OF GRAVITY (m)			INERTIA (m <sup>4</sup> )		
			FRAME No.			x	y	z	x	y	z
			Initial	Final							
FORWARD PEAK TANK (SB)	FOR PEAK TK-S	TQ-533509S	96	119	12522.8	12871.1	306.392	-13.886	17.789	35862.9	17979.5
NO. 1 WATER BALLAST TANK (PS)	N1 WB TK-P	TQ-533508P	279	25.724	6181.0	6316.0	279	-25.724	15.67	741.5	18423.3
NO. 1 WATER BALLAST TANK (SB)	N1 WB TK-S	TQ-533508S	279	25.724	6181.0	6316.0	279	-25.724	15.67	741.5	18423.3
NO. 2 WATER BALLAST TANK (PS)	N2 WB TK-P	TQ-533508P	83	98	7187.8	7367.5	246.600	25.724	15.67	865.1	23955.5
NO. 2 WATER BALLAST TANK (SB)	N2 WB TK-S	TQ-533508S	83	98	7187.8	7367.5	246.600	-25.724	15.67	865.1	23955.5
NO. 3 WATER BALLAST TANK (PS)	N3 WB TK-P	TQ-533508P	76	83	7187.8	7367.5	208.800	25.724	15.67	865.1	23955.5
NO. 3 WATER BALLAST TANK (SB)	N3 WB TK-S	TQ-533508S	76	83	7187.8	7367.5	208.800	-25.724	15.67	865.1	23955.5
NO. 4 WATER BALLAST TANK (PS)	N4 WB TK-P	TQ-533508P	69	76	7187.8	7367.5	171.000	25.724	15.67	865.1	23955.5
NO. 4 WATER BALLAST TANK (SB)	N4 WB TK-S	TQ-533508S	69	76	7187.8	7367.5	171.000	-25.724	15.67	865.1	23955.5
NO. 5 WATER BALLAST TANK (PS)	N5 WB TK-P	TQ-533508P	62	69	7187.8	7367.5	133.200	25.724	15.67	865	23955
NO. 5 WATER BALLAST TANK (SB)	N5 WB TK-S	TQ-533508S	62	69	7187.8	7367.5	133.200	-25.724	15.67	865	23955
NO. 6 WATER BALLAST TANK (PS)	N6 WB TK-P	TQ-533508P	55	62	7187.8	7367.5	95.400	25.724	15.67	865.1	23955.5
NO. 6 WATER BALLAST TANK (SB)	N6 WB TK-S	TQ-533508S	55	62	7187.8	7367.5	95.400	-25.724	15.67	865.1	23955.5
NO. 7 WATER BALLAST TANK (PS)	N7 WB TK-P	TQ-533508P	47	55	8385.8	8595.5	94.450	25.724	15.67	1009.2	46456.6
NO. 7 WATER BALLAST TANK (SB)	N7 WB TK-S	TQ-533508S	47	55	8385.8	8595.5	94.450	-25.724	15.67	1009.2	46456.6
NO. 8 WATER BALLAST TANK (PS)	N8 WB TK-P	TQ-533508P	3	36	3746.9	3848.6	21.224	25.672	18.733	682.3	18325.2
NO. 8 WATER BALLAST TANK (SB)	N8 WB TK-S	TQ-533508S	3	36	3746.9	3848.6	21.224	-25.672	18.733	682.3	18325.2
AFT PEAK TANK	AFT PEAK TK	TQ-533509C	8	5	1039.0	1039.0	2.469	0.000	26.946	30763.2	328.1
TOTAL			1039.2	8	1039.2	1039.2					

ITEM	ABBREVIATION	TAG	SPECIFIC GRAVITY: 0.880 (m <sup>3</sup> )		VEGHT (t)	CENTER OF GRAVITY (m)			INERTIA (m <sup>4</sup> )		
			FRAME No.			x	y	z	x	y	z
			Initial	Final							
NO.1 DIESEL OIL STORAGE TANK (PS)	N1 DO TK-P	TQ-533509P	9	31	2384.2	1978.9	21.826	7.200	15.265	4326.9	9314.9
NO.2 DIESEL OIL STORAGE TANK (SB)	N1 DO TK-S	TQ-533509S	9	31	2384.2	1978.9	21.826	-15.300	15.265	4326.9	9314.9
NO.1 DIESEL OIL SERVICE TANK (PS)	N2 DO TK-P	TQ-533502P	9	31	1341.1	1113.1	21.826	18.450	15.265	876.9	5239.6
NO.2 DIESEL OIL SERVICE TANK (SB)	N2 DO TK-S	TQ-533502S	9	31	1341.1	1113.1	21.826	-18.450	15.265	876.9	5239.6
DIESEL OIL DRAIN TANK	DO DRAIN TK	TQ-533505	31	36	72.3	68.9	39.150	-18.000	2.359	27.3	17.5
FWD DIESEL OIL OVERFLOW TANK	FWD DO OVERF TK	TQ-533503	105	108	12.3	14.4	95.950	-1.350	38.250	4.4	4.4
AFT DIESEL OIL OVERFLOW TANK	AFT DO OVERF TK	TQ-533504	31	36	124.7	124.7	39.150	19.800	12.800	41.0	59.0
TOTAL			1645.0	8	6381.9						

ITEM	ABBREVIATION	TAG	SPECIFIC GRAVITY: 1.000 (m <sup>3</sup> )		VEGHT (t)	CENTER OF GRAVITY (m)			INERTIA (m <sup>4</sup> )		
			FRAME No.			x	y	z	x	y	z
			Initial	Final							
NO.1 DISTILLED WATER STORAGE TANK (PS)	DIST W TK-P	TQ-519599P	5	15	434.2	434.2	9.000	19.794	26.562	181.1	328.1
NO.2 DISTILLED WATER STORAGE TANK (SB)	DIST W TK-S	TQ-519599S	5	15	447.8	447.8	9.000	-2.700	26.650	181.1	328.1
NO.1 FRESH WATER STORAGE TANK (PS)	FRESH W TK-P	TQ-519592P	5	15	1407.6	1407.6	9.000	0.512	26.613	3791.0	1039.7
NO.2 FRESH WATER STORAGE TANK (SB)	FRESH W TK-S	TQ-519592S	5	15	1393.9	1393.9	9.000	-13.894	26.567	3791.0	1039.6
TOTAL					3683.5	3683.5					

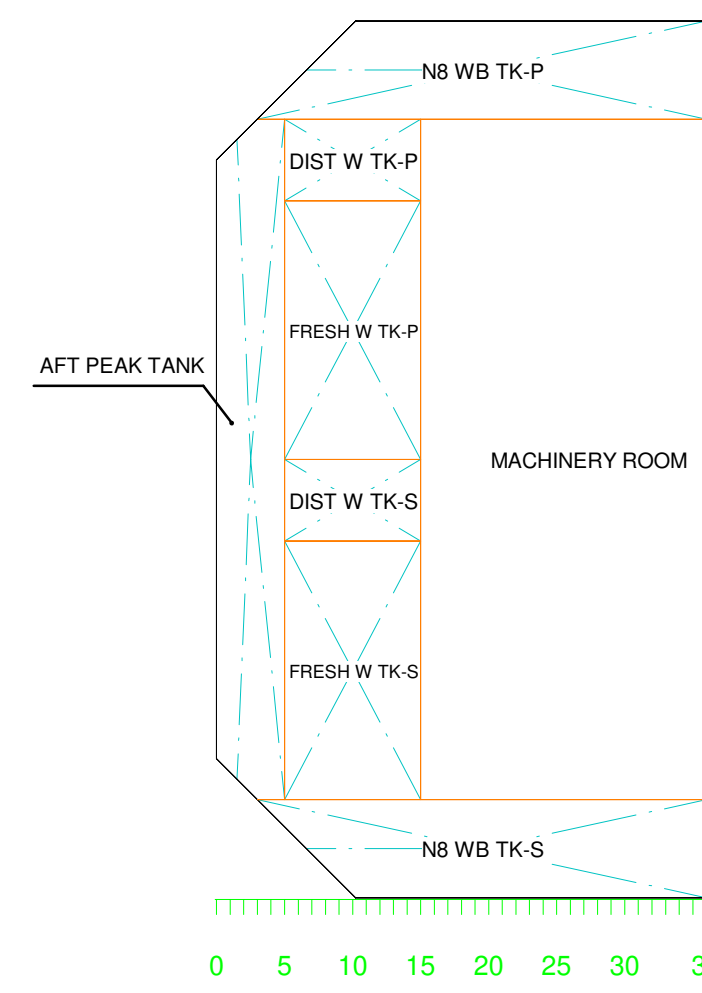
ITEM	ABBREVIATION	TAG	SPECIFIC GRAVITY: 1.000 (m <sup>3</sup> )		VEGHT (t)	CENTER OF GRAVITY (m)			INERTIA (m <sup>4</sup> )		
			FRAME No.			x	y	z	x	y	z
			Initial	Final							
PRODUCED WATER TANK - AFT	PRD W TK-AFT	TQ-533509A	69	72	10864.3	10864.3	105.200	-11.226	15.687	15379.3	7975.2
PRODUCED WATER TANK - FWD	PRD W TK-FWD	TQ-533509B	73	76	10864.3	10864.3	101.800	-11.226	15.687	15379.3	7975.2
TOTAL					21728.6	21728.6					

ITEM	ABBREVIATION	TAG	SPECIFIC GRAVITY: 1.000 (m <sup>3</sup> )		VEGHT (t)	CENTER OF GRAVITY (m)			INERTIA (m <sup>4</sup> )		
			FRAME No.			x	y	z	x	y	z
			Initial	Final							
SLUDGE TANK	SLUDGE TK	TQ-5335062	31	36	90.4	90.4	39.150	-20.250	2.359	34.2	24.2
BILGE WATER SETTLING TANK	BILGE TK	TQ-5335091	31	36	124.7	124.7	39.150	-19.800	12.800	41.0	59.0
TOTAL					215.1	215.1					

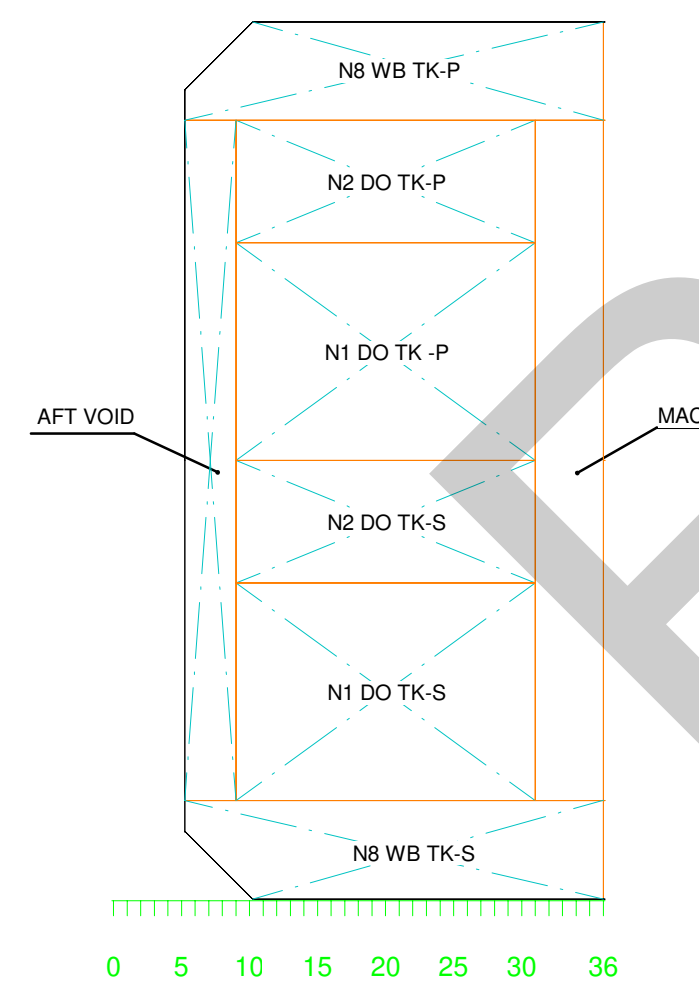
ITEM	ABBREVIATION	TAG	SPECIFIC GRAVITY: 1.000 (m <sup>3</sup> )		VEGHT (t)	CENTER OF GRAVITY (m)			INERTIA (m <sup>4</sup> )		
			FRAME No.			x	y	z	x	y	z
			Initial	Final							
COFFERDAM	COFFERDAM	TQ-1358508	36	49	5783.9	35.894	0.000	15.638	27391.2	1188.9	
TOTAL					5783.9						

ITEM	ABBREVIATION	TAG	SPECIFIC GRAVITY: 1.000 (m <sup>3</sup> )		VEGHT (t)	CENTER OF GRAVITY (m)			INERTIA (m <sup>4</sup> )		
			FRAME No.			x	y	z	x	y	z
			Initial	Final							
PRODUCED WATER VOID	PRD VOID	TQ-1358509	72	73	3623.0	176.978	-11.224	15.691	925.5	295.2	
AFT VOID	AFT VOID	TQ-1358509C	5	31	3284.9	17.183	0.000	11.128	27337.5	175.0	
TOTAL					6907.9						

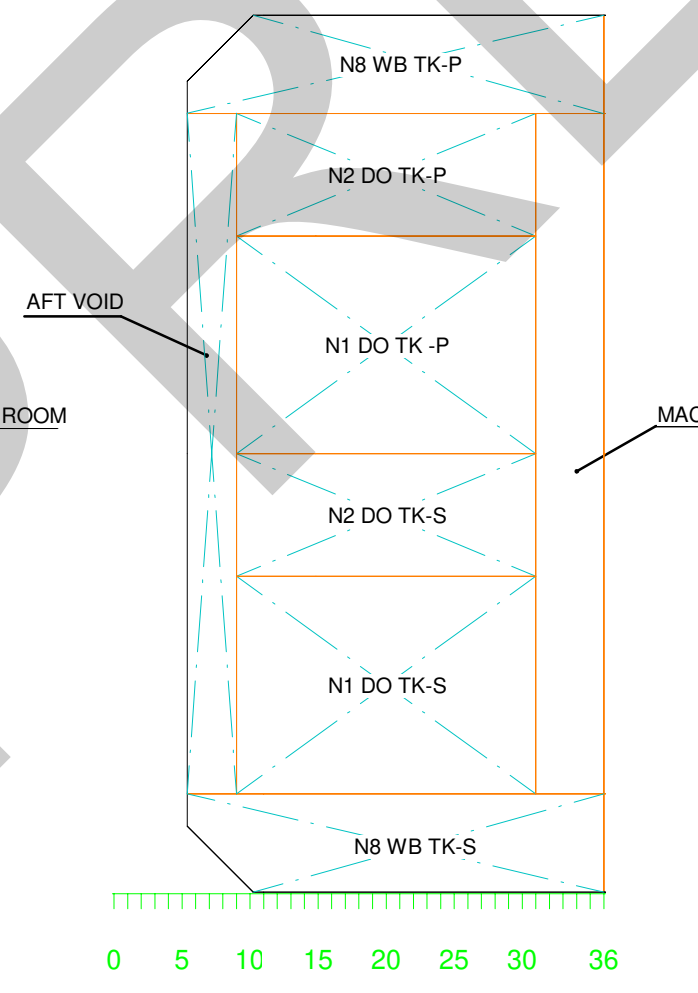
ITEM	ABBREVIATION	TAG	SPECIFIC GRAVITY: 1.000 (m <sup>3</sup> )		VEGHT (t)	CENTER OF GRAVITY (m)			INERTIA (m <sup>4</sup> )		
			FRAME No.			x	y	z	x	y	z
			Initial	Final							
FORE CASTLE			36	119	5291.4	287.520	0.000	0.000	34.160		
MACHINERY ROOM			9	36	11354.3	25.830	0.000	21.090			
POOP			6	36	6177.4	15.187	0.000	33.934			
TOTAL					22823.0						



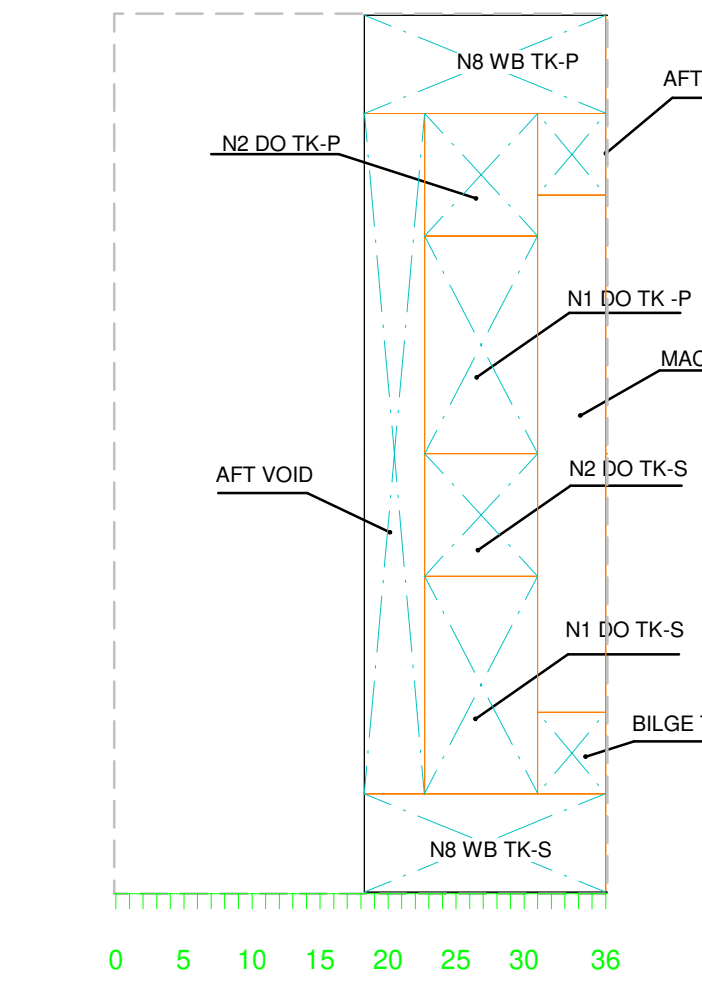
First Deck  
LKG DOWN  
(SCALE: 1:500 mm)



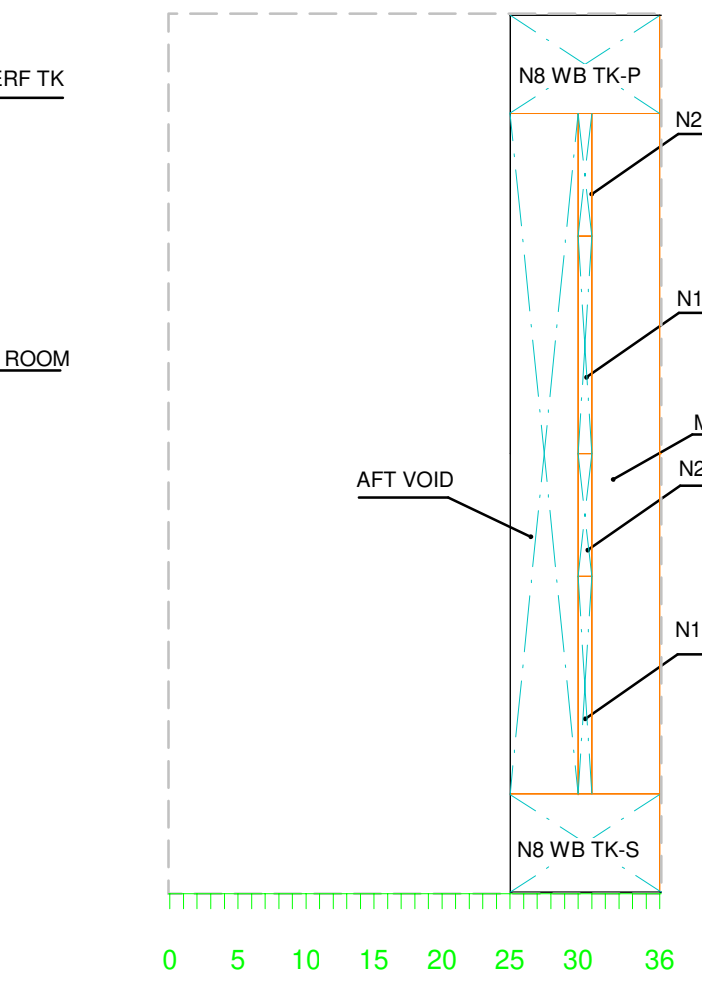
Second Deck  
LKG DOWN  
(SCALE: 1:500 mm)



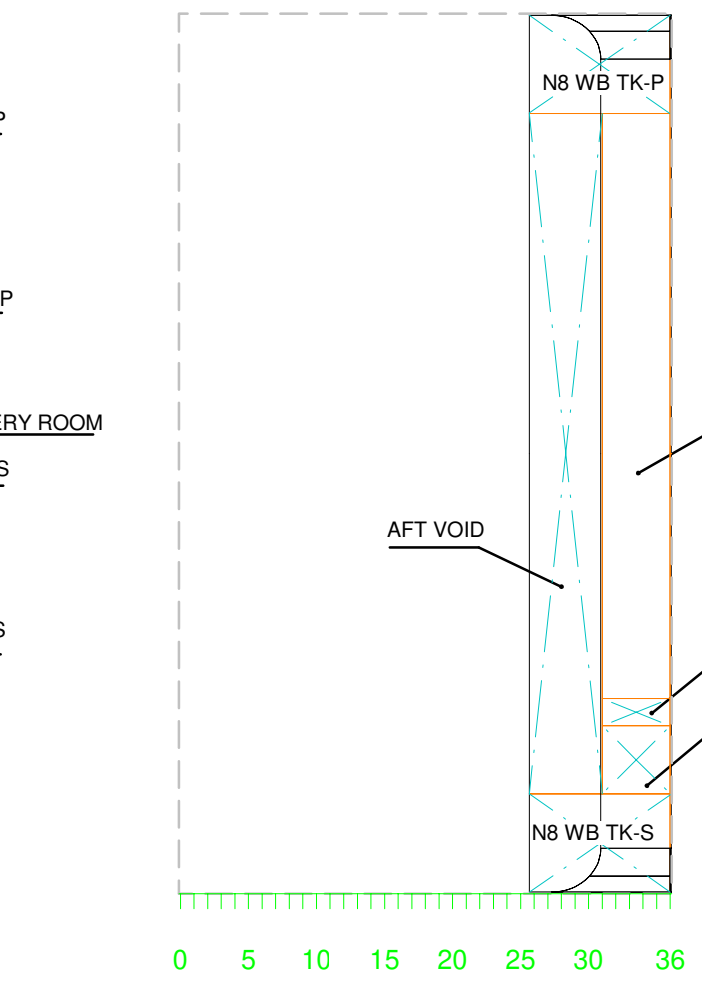
3RD DECK - 15500 mm  
LKG DOWN  
(SCALE: 1:500 mm)



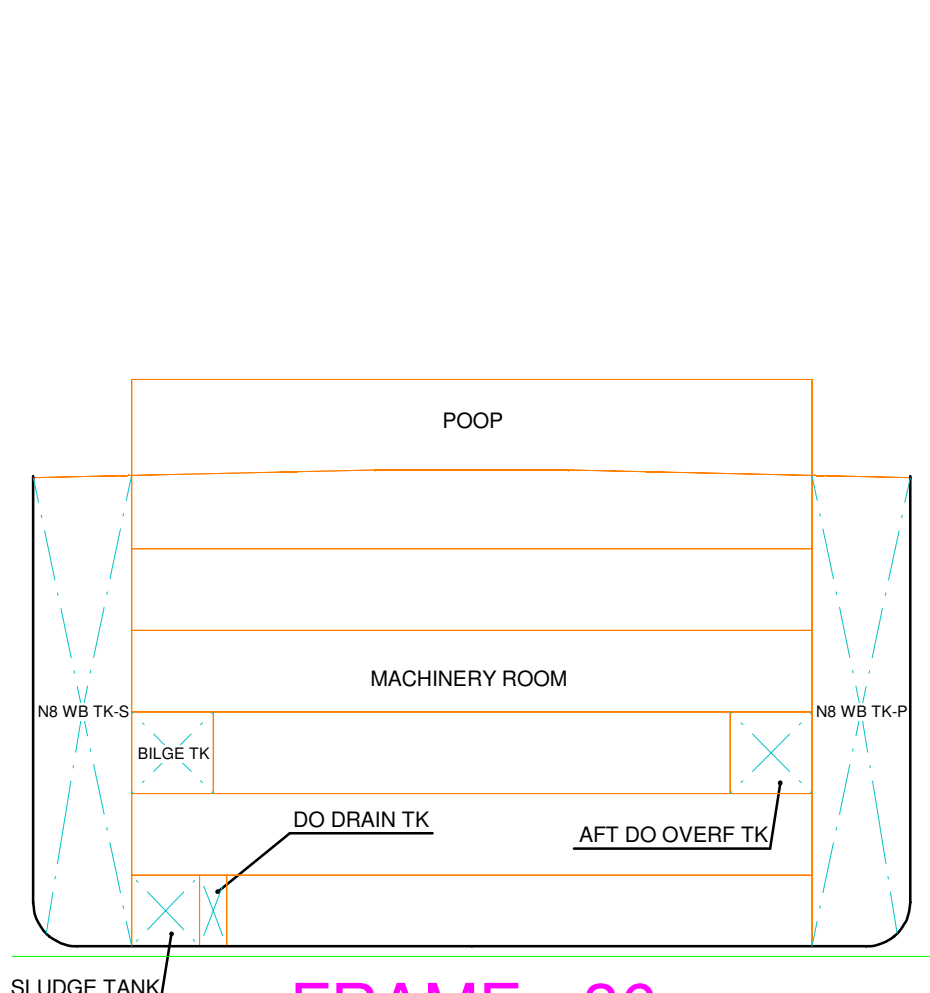
4TH DECK - 10100 mm  
LKG DOWN  
(SCALE: 1:500 mm)



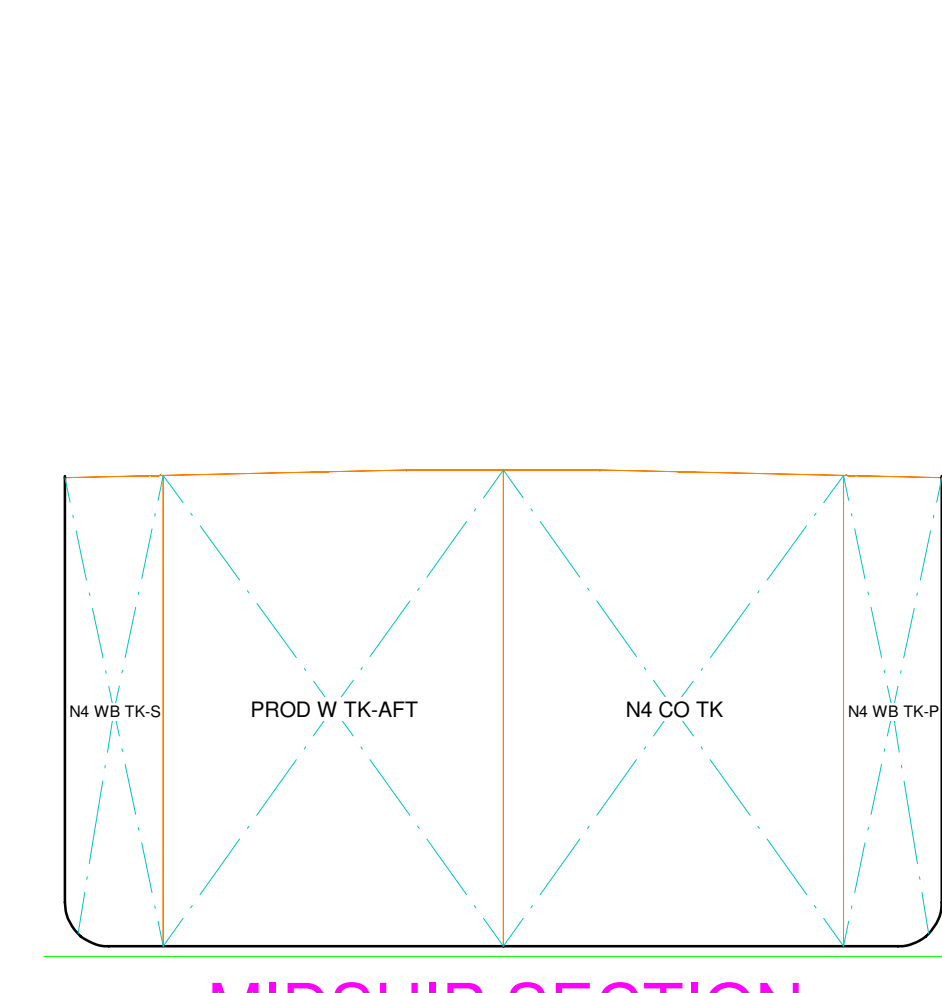
5TH DECK - 4700 mm  
LKG DOWN  
(SCALE: 1:500 mm)



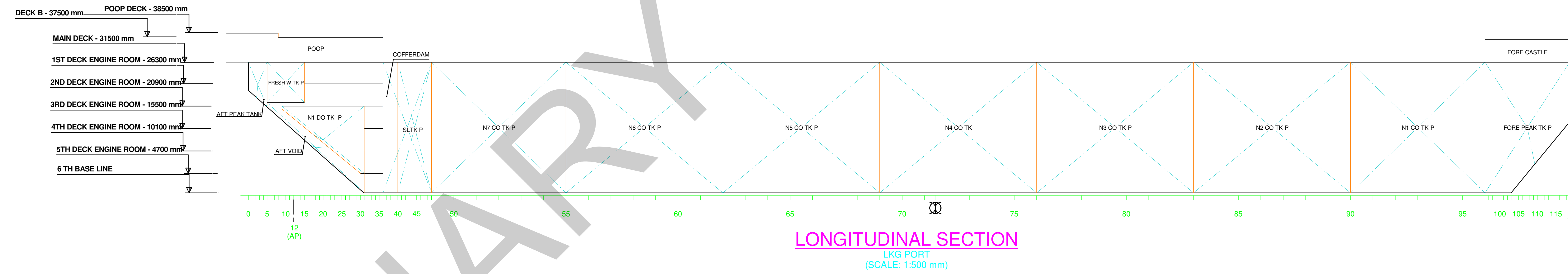
6TH BASE LINE  
LKG DOWN  
(SCALE: 1:500 mm)



FRAME - 36  
LKG AFT  
(SCALE: 1:500 mm)



MIDSHIP SECTION  
LKG AFT  
(SCALE: 1:500 mm)



LONGITUDINAL SECTION  
LKG PORT  
(SCALE: 1:500 mm)

